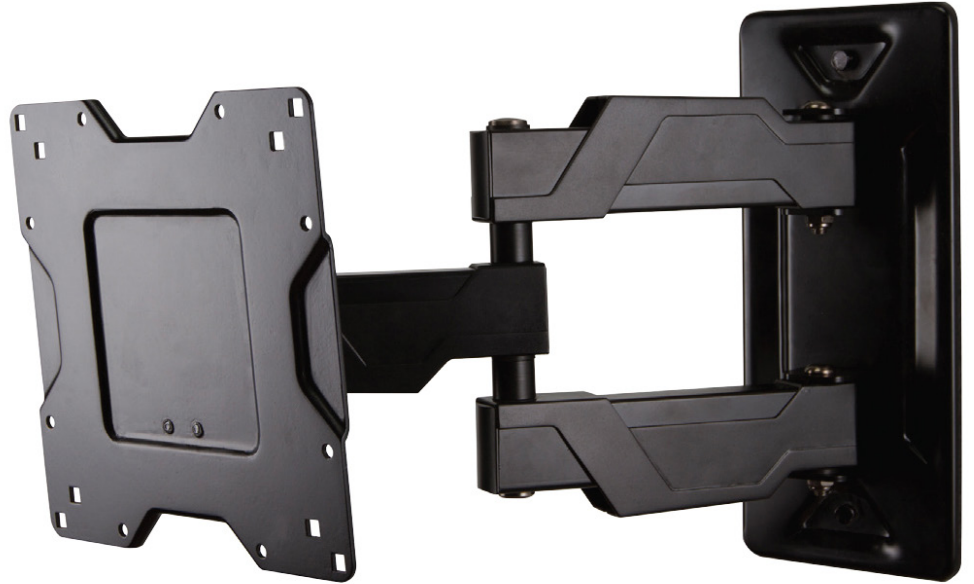


ergotron®

moving you forward

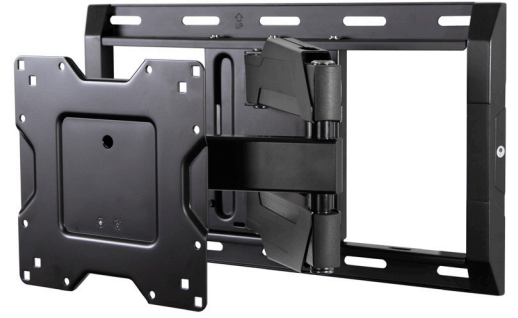
Neo-Flex® Cantilever, VHD Large Display or TV Mount

- Extends up to 14" (36 cm) from wall. Minimum profile is just 3.2" (8.2 cm)
- Tilt and pan for maximum viewing flexibility
- Includes adaptor for greater panel compatibility
- Integrated cable management and covers guide and hide cords
- Lift n' Lock™ allows you to easily attach your flat panel to the mount
- Two-tone design and modern aesthetic complements newer panels
- Built-in flat screen leveling



SEAMLESSLY INTEGRATE DISPLAYS IN HOME,
OFFICE AND COMMERCIAL ENVIRONMENTS

This low-profile full motion mount fits most 32"–63" flat panel monitors and TVs up to 80 lbs (36.3 kg) and is well-suited for those applications where seamless integration counts most. Extruded aluminum construction provides maximum support in a lightweight TV wall mount. Its thoughtful design provides ample throw and nests the display centered on the wall.



NEO-FLEX CANTILEVER, UHD
61-132-223

Neo-Flex Cantilever, VHD

Neo-Flex Cantilever, UHD

| Part # (color) | 45-385-223 (black) | 61-132-223 (black) |
|---|--|--|
| Includes | Wall plate, cantilever arm, monitor plate, cable management, spider 46 adapter*, complete hardware kit | Wall plate, full motion arm, monitor plate, cable management, spider 46 adapter*, complete installation hardware |
| Typical LCD size | ≤ 63" | ≤ 37" |
| <small>LCD SIZE IS APPROXIMATION. DIMENSION IS DIAGONAL MEASUREMENT OF SCREEN. LCD SIZE MAY BE EXCEEDED AS LONG AS SCREEN WEIGHT DOES NOT EXCEED MAXIMUM WEIGHT CAPACITY OF THE MOUNT</small> | | |
| Weight Capacity* | ≤ 80 lbs (36.3 kg) | ≤ 120 lbs (54.4 kg) |
| Tilt | 20° | 16° |
| Pan | 180° | 180° |
| VESA | MIS-E/F (200 x 100 mm to 600 x 400 mm) | MIS-F (200 x 200 mm to 600 x 400 mm) |
| Product Weight | 9.3 lbs (4.2 kg) | 14.5 lbs (6.6 kg) |
| Shipping Dimensions | 14.2" x 12.8" x 4.5" (36 x 33 x 11 cm) | 23.2" x 12.8" x 4.5" (59 x 33 x 12 cm) |
| Shipping Weight | 10.5 lbs (4.8 kg) | 16.6 lbs (7.5 kg) |
| Warranty | 3-years | |

*If adapter is used, add 0.2" (6 mm) to minimum profile and maximum extension

